



*The clear choice.*

## Lumisty window films

### View control

- **Privacy screening with a difference**
- **Ideal for receptions**
- **Security screening for financial and other sensitive offices**
- **Provides modesty for glazed balustrades and walkways**

### Active Graphics

- **Logos and signs which appear and disappear as you walk past**
- **Eye-catching retail displays**

### Exclusive

- **Unique in-situ treatment for glass**
- **Appearance changes from clear to frosted**
- **Three viewing angle options available**

## Description

**The appearance** of Lumisty changes from transparent to translucent, and vice versa, depending on the angle from which it is viewed. By applying Lumisty to transparent windows you can control the view through.

Lumisty is available in three types: X, Y and Z. Lumisty offers varied invisible ranges in a vertical or horizontal direction.

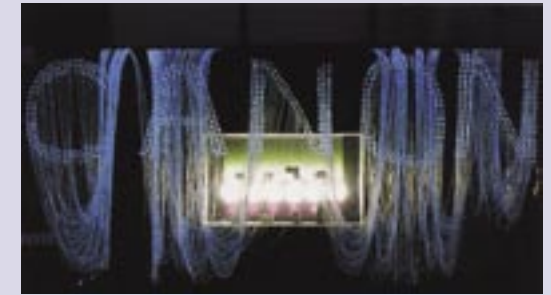
## Applications

Lumisty applications typically fall into four main categories: retail or exhibition displays, active graphics, privacy/security screening and view control/modesty on glazed balustrading and walkways.

### Retail displays

Lumisty is used to enhance the eye-catching appearance of shop window displays in a wide variety of retail sectors.

The view control film can simply be added to an existing display or can be combined with special lighting effects such as back-projection when designing new window dressing.



*Above: Lumisty used in conjunction with coloured fibre-optics to create an intriguing and vibrant window display at a department store in Oxford Street, London.*



# Lustalux

*The clear choice.*

## Lumisty window films

### Applications

#### Active graphics and logos

For window graphics which appear and disappear as you walk past!

Lumisty 'active graphics', either made from film or cut clear out of completely filmed panel, are arranged so that the design is apparent from one viewpoint but is invisible from another, lending much greater impact to the communication of your message or logo

#### Privacy and security

The optical performance of Lumisty lends itself to many requirements of privacy and security. Typical applications include reception and security areas and offices handling financial and other sensitive information.

#### View control and modesty

Lumisty is the ideal product to provide screening just where it is needed, for example on stairwell or elevated walkway glazing. A typical requirement is to obscure a given line of vision for modesty and for the benefit of vertigo sufferers.

Lumisty appears the same, at any given angle, to viewers both sides of the glass, and does not privilege either viewer with a one-way privacy effect. However, by selecting the correct film type, it is possible to introduce the required vision control in many different situations.

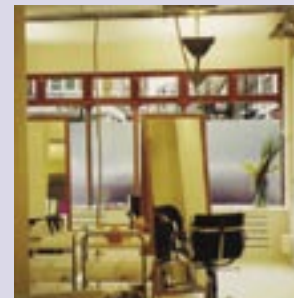
Lumisty is applicable on glass, acrylic and polycarbonate sheets.

Single-ply Lumisty has one view control film. Double-ply Lumisty has two view control films and provides a wider invisible range than single-ply Lumisty.



*Above: Window graphics that appear and disappear as you walk past.*

*Below: Lumisty at a London hairdresser's shop gives clients a degree of privacy without darkening or totally obscuring the windows.*



*Below and right: External and internal views of Lumisty type MFZ-2555 used on a security control room to facilitate visitor control and obscure views of monitor screens.*



The clear choice.

## Lumisty window films

### Properties

#### View control

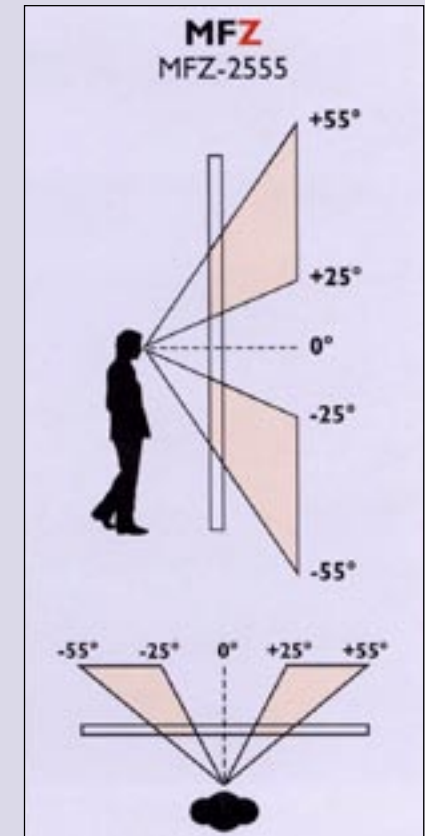
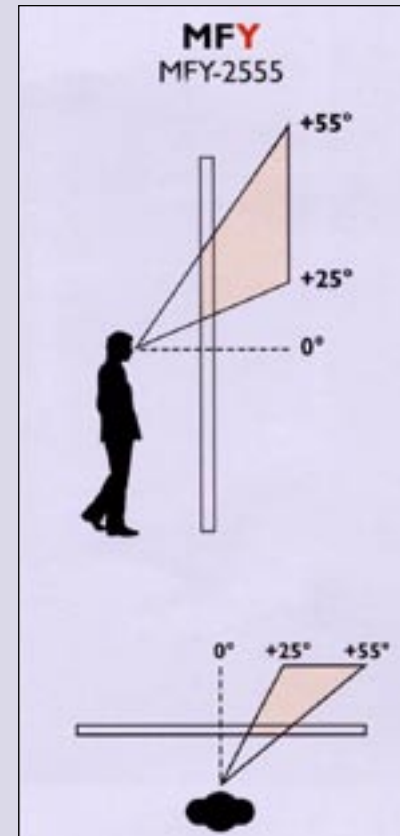
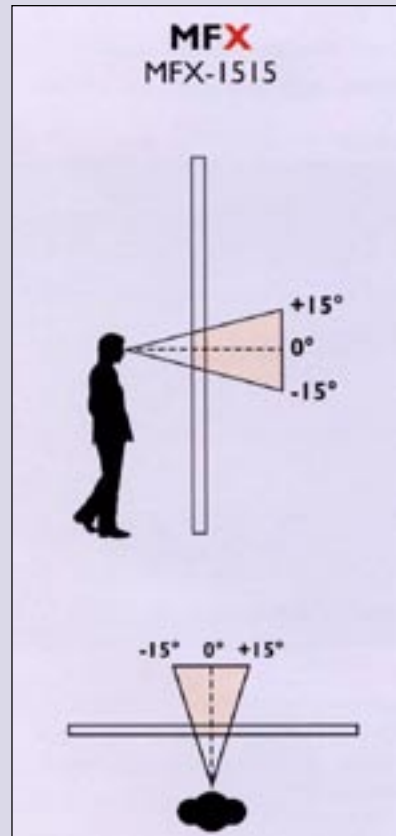
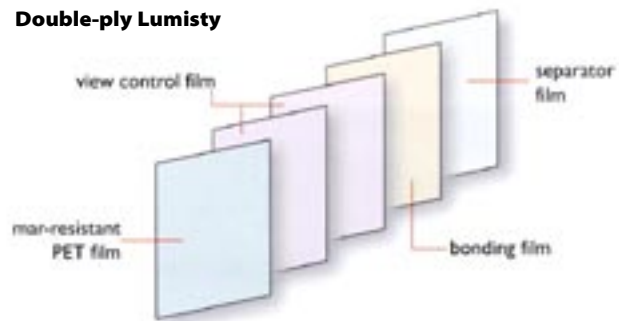
In the translucent area, Lumisty diffuses transmitted light and offers excellent invisibility.

The total light transmission in the translucent area is the same as in the transparent area (88% approx).

These diagrams (right) illustrate the invisible ranges of Lumisty when used vertically and horizontally. The shaded areas represent the transparent phase.

### Composition

#### Double-ply Lumisty



## Lumisty Privacy window films

### Performance

| Film Code   | Translucency               | Type of structure | Invisible range | Thickness (microns) |
|---|----------------------------|-------------------|-----------------|---------------------|
| The change of Lumisty between transparent and translucent occurs with a change in angle from which it is viewed; the angles given may vary slightly due to the nature of the manufacturing process. |                            |                   |                 |                     |
| MFX-1515  | Front translucent          | single-ply        | -15° ~ +15°     | 200                 |
| MFY-2555  | Uniangle-range translucent | single-ply        | +25° ~ +55°     | 200                 |
| MFZ-2555  | Biangle-range translucent  | double-ply        | ±25° ~ ±55°     | 400                 |

Accurate selection of window films requires specialist knowledge, and it is recommended that specifiers contact the company at the specification stage. It is the users' responsibility to ensure that the product is suitable for the intended use.